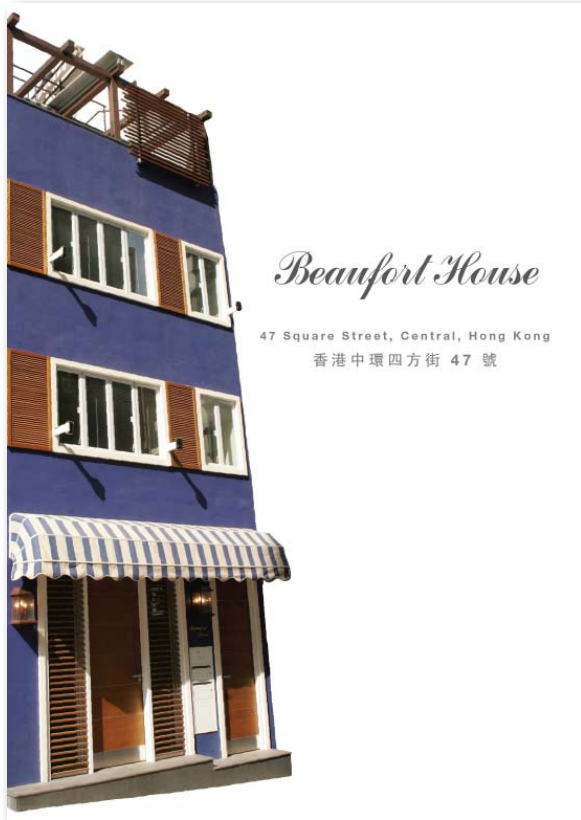


ezrakirkdesign printwebinteractivephotographyvideo

print design

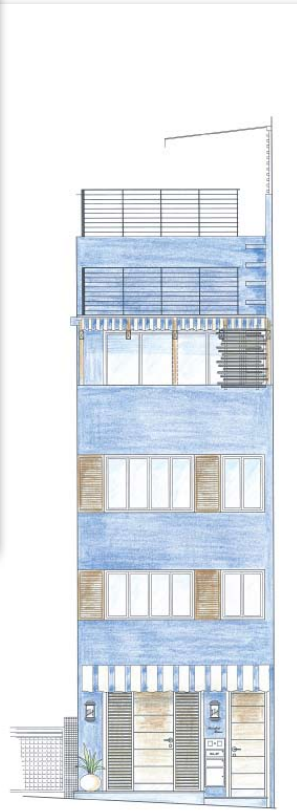
the box: 1a bonanza court, 3 bonham road, mid levels, hong kong

in the box: +852 2819 8479 out of the box: +852 9168 2401 mail the box: ezra@ezrakirk.com extended box: www.ezrakirk.com



Beaufort House

47 Square Street, Central, Hong Kong
香港中環四方街 47 號



Design by Ezra Kirk Design - www.ezrakirk.com



- Whole four floor building located on 960 sq ft site.
 - Land title with 676 years to expiry.
 - Completed in 1990
 - Commercial/residential zoning, ideal for work and residential use.
 - House totally renovated with architecture by Jayson Design.
 - Flexible design can be used as one or two separate units.
 - Four and half bathrooms.
 - Fitted kitchen with all modern appliances.
- 聖倫建築樓高四層 地皮面積 960 平方呎。
 - 土地業權尚餘 676 年。
 - 於 1990 年落成。
 - 商住兼用用途 適合工作及起居生活。
 - 樓宇經過完全翻新 由 Jayson Design 負責建築設計。
 - 設計靈活 可用作一樓或兩層分開的單位。
 - 取兩半浴室。
 - 廚房設備齊全 備有各種現代用具。



details

promotional brochure. design and photography art direction

Photograph supplied by client / sketches supplied by interior designer.



Main Course Bar Food 酒吧主菜	
All Day Scottish Breakfast 蘇格蘭早餐 (全日供應) \$125	Square sliced sausage, breakfast sausage, potato scone, mushrooms, tomato, bacon, eggs, black pudding, haggis balls, sautéed onion potato, baked beans and toast 切粒香腸、煎火腿、馬鈴薯碎餅、煎蛋、薯泥、雞蛋、豬紅香腸、haggis肉丸、洋葱炒馬鈴薯、焗豆及多士
Vegetarian All-Day Breakfast 素食早餐 (全日供應) \$98	Two eggs, tomato, baked beans, potatoes, hash brown, sautéed mushrooms, potato scones and toast 雙蛋、蕃茄、焗豆、馬鈴薯、炸薯餅、炒蘑菇、馬鈴薯碎餅及多士
Lamb Stovies (Scottish Favourite) 燒羊肉 (蘇格蘭風味菜色) \$102	Tender pieces of lamb over an erf of onion and potatoes simmered and served with outtakes. 以原罐洋葱及馬鈴薯烹調鮮嫩羊肉，配蒸薯餅享用
Sausage Stovies / 燒香腸 \$92	A variation on a traditional Scottish dish. Imported sliced rich pepper sausage with sliced potato in rich onion gravy and outtakes 將傳統蘇格蘭菜色加以變化，以香濃洋葱汁烹調進口胡椒香腸及馬鈴薯，配蒸薯餅享用
Mince and Tatties (Scottish Favourite) 碎肉馬鈴薯 (蘇格蘭風味菜色) \$78	Mince beef with onion, carrots, turnip in gravy 免治牛肉、洋葱、甘菊及薯蕷，肉汁香濃
McSween's Haggis With Turnips and Mashed Potato / Haggis配薯蕷及薯蕷	Haggis is the national dish of Scotland. Made from a blend of oatmeal, spices, beef suet and offal. Traditionally served with a shot of whisky to pour over, we offer rich whisky gravy 蘇格蘭的代表菜色，選用由McSween生產的Haggis，精選薯蕷、香料、牛脂及肉類烹調而成。傳統食法為灑上小杯威士忌，本店則配以香濃威士忌肉汁
Small Portion 小 \$88	
Large Portion 大 \$118	
Haggis Vegetarian Option 素食Haggis \$88	
Small Portion 小 \$88	
Large Portion 大 \$122	
Bangers with Mash / 滋味香腸 \$88	Imported English style sausages served with a choice of gravy or baked beans 進口英式香腸，可選配肉汁或焗豆
Traditional Scotch Pie / 傳統蘇格蘭肉批 \$112	Served with mash potato or wedges, served with gravy or baked beans and a side salad 配薯蕷或薯蕷，可選配肉汁或焗豆及沙律
Grilled Gammon Steak / 烤豬腿扒 \$120	Served with mashed potato or wedges and baked beans and with Egg or Pineapple 配薯蕷或薯蕷角焗豆，及焗蛋或菠蘿
Cheese Beef Burger / 芝士牛肉漢堡 \$88	With lettuce, onion and tomato, topped with Cheddar cheese. Served with potato wedges 生菜、洋葱、蕃茄及車打芝士，配以薯蕷角
Haggis Burger / Haggis漢堡 \$108	A fresh take on a Scottish staple. Served with garnish and potato wedges and a spicy sauce 選用新鮮蘇格蘭食材炮製，配薯蕷角及辣味醬汁
Scottish Style Steak & Ale Pie 蘇格蘭牛扒及麥芽啤酒餡餅 \$128	Tender beef simmered in rich gravy with mushrooms, carrot and sausage served with mashed potatoes and vegetables 以香濃肉汁烹調嫩滑牛肉、雞肉、甘菊及薯蕷，配薯蕷及蔬菜
A LA Carte	
Lamb Fillet / 羊柳 \$168	Lamb Fillet with a Rich Mint Cream Sauce served with French Fries and Salad 香濃薄荷忌廉汁伴鮮嫩羊柳，配薯蕷條及沙律
Scottish Peppered Salmon 蘇格蘭黑椒三文魚 \$158	Grilled Salmon Steak with Spring onion Mash, in a Lemon Garlic Butter sauce 以檸檬蒜香牛油汁香烤三文魚扒
Scots Highland Steak / 蘇格蘭高地牛扒 \$148	8oz Sirloin Steak in Black Pepper Sauce with Garlic Mash and Salad 8安士黑椒西冷牛扒，配薯蕷及沙律
Duck à la Orange \$128	On a bed of Rice Served with Local Vegetables
T-Bone Steak and Wild Mushroom Medley \$178	With Mushroom Red Wine Sauce and Served with French Fries and Salad
Seared Tuna with King Prawn \$188	With Coriander, Black Pepper, Leaves and Italian Dressing. Served with Baby New Potatoes and Salad
Surf & Turf: Beef Tenderloin and Tiger Prawn \$188	In Spicy Shallot Garlic Butter Served with French Fries or Baked Potato and Salad
King Prawns \$178	Prawns in a Creamy Mustard and Garlic Sauce Served with Baby Potatoes and Green Vegetables

details

menu design with hard permanent cover and a template insert for the client to update when needed.



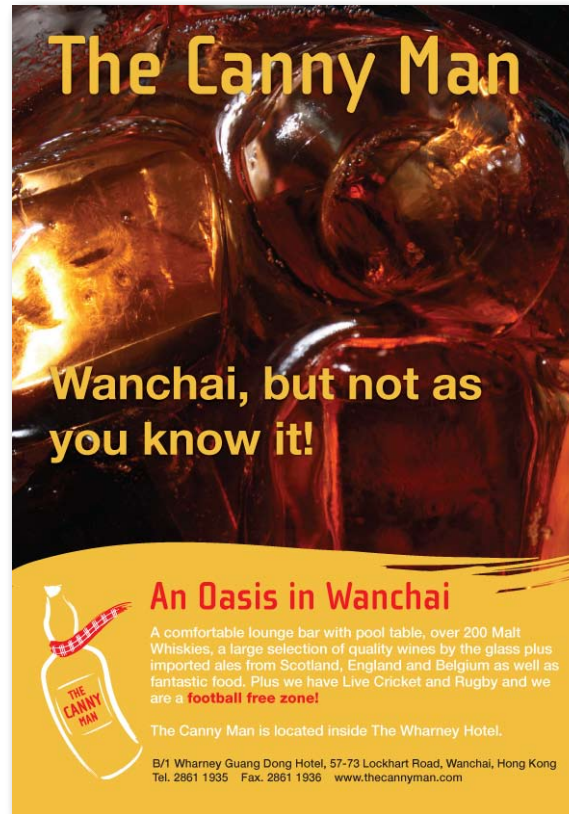
The Canny Man
welcomes you to the 2008 HK 7's

Hungry?
Food available all day including
breakfast and bar snacks.

Thirsty?
We have over 200 Whiskies in stock
as well as more than 40 imported
quality ales from Scotland, England
and Europe.

Open till 2am
Entry via lobby of Hotel

Basement Bar, B/1 Wharney Guang Dong Hotel
Tel. 2861 1935 / Fax. 2861 1936 / www.thecannyman.com



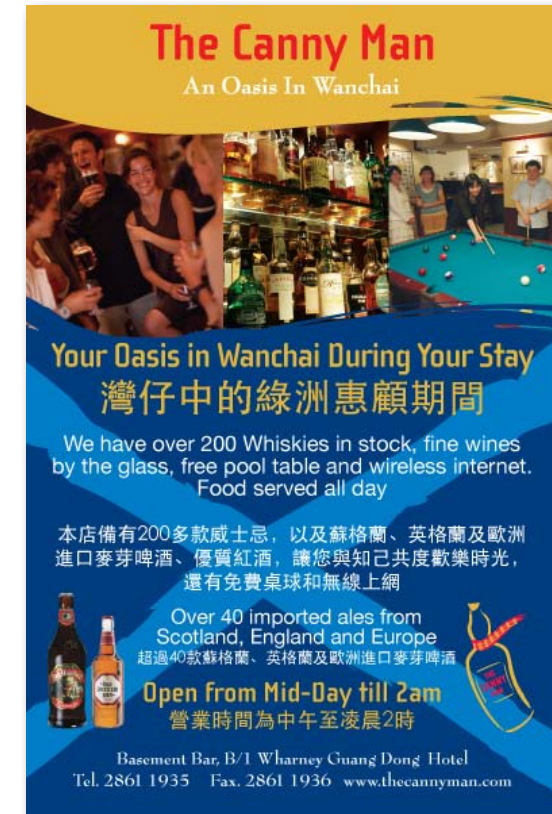
The Canny Man

**Wanchai, but not as
you know it!**

An Oasis in Wanchai
A comfortable lounge bar with pool table, over 200 Malt
Whiskies, a large selection of quality wines by the glass plus
imported ales from Scotland, England and Belgium as well as
fantastic food. Plus we have Live Cricket and Rugby and we
are a **football free zone!**

The Canny Man is located inside The Wharney Hotel.

B/1 Wharney Guang Dong Hotel, 57-73 Lockhart Road, Wanchai, Hong Kong
Tel. 2861 1935 Fax. 2861 1936 www.thecannyman.com



The Canny Man
An Oasis In Wanchai

Your Oasis in Wanchai During Your Stay
灣仔中的綠洲惠顧期間

We have over 200 Whiskies in stock, fine wines
by the glass, free pool table and wireless internet.
Food served all day

本店備有200多款威士忌，以及蘇格蘭、英格蘭及歐洲
進口麥芽啤酒、優質紅酒，讓您與知己共度歡樂時光，
還有免費桌球和無線上網

Over 40 imported ales from
Scotland, England and Europe
超過40款蘇格蘭、英格蘭及歐洲進口麥芽啤酒

Open from Mid-Day till 2am
營業時間為中午至凌晨2時

Basement Bar, B/1 Wharney Guang Dong Hotel
Tel. 2861 1935 Fax. 2861 1936 www.thecannyman.com

details

a range of poster designs for internal, in-hotel and outside (POP) use

The Canny Man


Wanchai, but not as you know it!

An Oasis in Wanchai

A comfortable lounge bar with pool table, over 200 Malt Whiskies, a large selection of quality wines by the glass plus imported ales from Scotland, England and Belgium as well as fantastic food. Plus we have Live Cricket and Rugby and we are a **football free zone!**

The Canny Man is located inside The Wharney Hotel.

20% discount on food for HKCA members on presentation of your membership card




B/1 Wharney Guang Dong Hotel, 57-73 Lockhart Road, Wanchai, Hong Kong
Tel. 2861 1935 Fax. 2861 1936 www.thecannyman.com

The Canny Man
An Oasis In Wanchai

Over 200 Whiskies in stock

Over 40 imported ales from Scotland, England and Belgium, fine wines by the glass, food available all day. Plus... happy hours, finest Cuban cigars, live sport on big screen TV, free pool & wireless internet



Entry via lobby of Wharney Hotel (next to Carnegies)

B/1 Wharney Guang Dong Hotel, 57-73 Lockhart Road, Wanchai, Hong Kong
Tel. 2861 1935 Fax. 2861 1936 www.thecannyman.com

Hong Kong's Whisky Bar

We have over 200 Whiskies in stock as well as more than 40 imported ales from Scotland, England and Europe, fine wines by the glass, happy hours. Plus Cuban cigars, free pool table and free wireless internet.

Entry via lobby of Wharney Hotel (next to Carnegies)
B/1 Wharney Guang Dong Hotel,
57-73 Lockhart Road, Wanchai, Hong Kong
Tel. 2861 1935 Fax. 2861 1936
www.thecannyman.com



Whisky lover?



Then membership of The Canny Man Malt Whisky Club is ideal!

Membership includes:
A complimentary bottle of Malt Whisky. Private box for storage in The Canny Man. Details of the latest whisky news in our exclusive Quarterly Newsletter plus much more... additionally The Canny Man will source ANY bottle of Whisky for you World-wide - at cost, all for the special price of HK\$1,000

B/1 Wharney Guang Dong Hotel, 57-73 Lockhart Road, Wanchai Hong Kong
Tel. 2861 1935 Fax. 2861 1936 www.thecannyman.com



Fresh Mussels

Big buckets of fresh mussels from Australia


Choose From

White wine with cream
and mixed herbs
or
Chilli & Garlic

HK\$140 for a half kilo
served with crusty bread


The Canny Man

An Oasis In Wanchai




The only place for Scottish Specialites in HK

Over 200 Malt Whiskies in stock plus imported ales from Scotland, England and Europe.
Fine traditional Scottish and Asian food served all day.



Where to find us
Located inside The Wharney Hotel in the heart of Wanchai, away from the more familiar Lockhart Road.



Just a 5 minute walk from this theatre!

B/1 Wharney Guang Dong Hotel,
57-73 Lockhart Road, Wanchai, Hong Kong
Tel. 2861 1935 Fax. 2861 1936
www.thecannyman.com



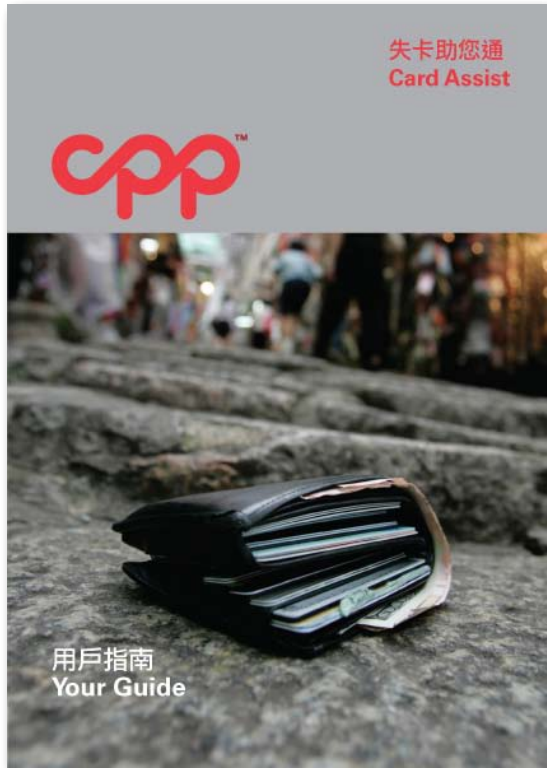
event ticket



membership card



invite



失卡助您通
Card Assist



用戶指南
Your Guide

信用卡及重要證件 (包括護照、回鄉證/ 簽證及獨特的資料, 在帶來保障的同時, CPP 也是您最理想的選擇。

membership, stored value cards) and valuable documents, identity card and driving licence). The more you register with CPP, ensuring that you are safely protected.

如何登記 How to register

致電登記 By phone
歡迎致電 +852 2520 2716, 我們的客戶服務熱線 24小時為您服務。
Call us now on +852 2520 2716. Our lines are open 24 hours a day.

電郵登記 By email
歡迎致電 +852 2520 2716, 我們的客戶服務熱線 24小時為您服務。
Call us now on +852 2520 2716. Our lines are open 24 hours a day.

詳情 details
致電聯繫
+852 2520 2716
+852 2520 2719
services@cppasia.com

客戶服務熱線
Customer service
card registration hotline: +852 2520 2716

失卡熱線:
Lost and stolen hotline: +852 2520 2716

電郵:
Email: services@cppasia.com

有關詳情及申請表格, 請參閱或向我們索取。
Full details of CPP's Card Assist can be found in your Terms and Conditions.
Card Protection Plan Limited
GPO Box 11229, Hong Kong
辦事處及服務熱線: 22129號
Card Protection Plan Limited



Card Assist



Life is complicated enough!
CPP Card Assist is here to simplify yours

Losing your wallet or purse, whether it's been stolen or you've simply misplaced it, can be stressful. Not only do you have to remember the contents, but collating all your card numbers and informing the appropriate organisations of the loss can be traumatic – especially if you don't have the luxury of time.

Thankfully CPP is here to help you when you need it most.

CPP's Card Assist removes the hassle of contacting all of your card companies. One simple call, any time of the day, anywhere you are, is all it takes. We'll take care of the rest for you.

Card Assist
If you've simply misplaced it, can be stressful, but collating all your card numbers and informing the appropriate organisations of the loss can be traumatic – especially if you don't have the luxury of time.

Card Assist
Report your lost/stolen cards
Agents to assist with replacement of travel tickets
Agents to help pay hotel bills
Agents to assist with replacement travel tickets

Agents to help pay hotel bills
Agents to assist with replacement travel tickets

Annual Subscription Fee	Cost
Individual Subscriber	HK\$198
Individual + One Additional Subscriber	HK\$228

Why not subscribe now?
Call us on +852 2998 6868

Card Assist covers an unlimited number of cards and valuable documents, from your passport, China Re-entry Permit and ID card to your credit and store cards. The more you register with CPP, the more cover and support we can provide.



失卡助您通



在緊張繁忙的生活中，CPP失卡助您通為您減輕因失卡所帶來的煩惱！

遺失銀包、手袋、財物被竊，或一時忘記擺放財物的地方確實令人煩惱。聯絡有關機構取消失卡固然重要，但您能否記起所有失卡的號碼及資料？在香港分秒必爭的生活中，您可有那麼多空閒時間與不同的客戶服務員糾纏？

多得CPP失卡助您通為您減輕煩惱，讓您把握每分每秒，處理生活上的其他挑戰！只需撥一個電話，無論何時何地，CPP都能夠即時為您聯絡所有發卡機構，減輕因失卡所帶來的煩惱！



CPP失卡助您通能幫助您的範圍：

- 如欲報失遺失或被竊的失卡，只需致電我們的免費24小時支援電話。
- 全球24小時失卡保障。
- CPP的專業客戶服務員助您補領各種遺失或被竊的旅遊證件及機票。
- 我們專業、友善並能操多國語言的客戶服務員隨時隨地為您代勞。
- 每位用戶可獲高達港幣20,000元酒店住宿費用預支（每日預支高達港幣1,000元）。
- 每位用戶可獲高達港幣7,500元緊急現金預支（每日預支高達港幣750元）。
- 每位用戶可獲高達港幣35,000元緊急放債預支。

所費無幾，即可享有安心的保障。

每年服務費	
保障	費用
個人用戶	港幣198元
親人+附屬用戶	港幣228元



立即行動，保障您的卡！

請致電 +852 2998 6868 以獲得即時保障。

失卡助您通保障您的所有卡（包括信用卡、會員卡、儲蓄卡）及重要證件（包括護照、回鄉證/回鄉卡、身份證及駕駛執照）。儘早向CPP登記更多卡及證件的資料，為您帶來更多的保障及支援。

本單經CPP失卡助您通計劃刊印。CPP附設的服務員失卡助您通內務部操作服務。
CA_SUH422-046/52P72007



fridge magnet

promotional email

GET CREATIVE
WITH CHAMELEON WORKSHOP

Art Classes
for Adults & Children

A few of our courses...
stART, smART, Fine Art, Chameleon Teens, pARTies, Mosaics, Pottery, Glazing, Decoupage, Woodwork, Sketching, Jewellery Making, Felting + More!

Please check our website for times and further information
www.chameleonworkshop.com

ABOUT CHAMELEON WORKSHOP

Chameleon Workshop offers a whole range of Art and Craft courses for people aged 3 and up. Whether you're a novice or a secret Da Vinci we provide studio space, quality materials, guidance and expert tuition in a relaxed and friendly atmosphere.

All our teachers are practising artists with their own specialist skill, ensuring a high level of enthusiasm and commitment in each class.

Adult courses...
Fine Art, Drop-in Workshops, Painting Nights, pARTies, Mosaics, Pottery, Oil Painting, Glazing, Decoupage, Life Drawing, Woodwork, Sketching, Jewellery Making, Bookbinding, Felting + More!

Chameleon Workshop also travels to schools, fairs and festivals. We also cater for corporate events!

tel: 25272251 fax: 25272252 email: info@chameleonworkshop.com web: www.chameleonworkshop.com
address: 2B Yan King Court, 119-121 Queen's Road East, Wanchai, Hong Kong

DEVILS ADVOCATE

SEVENS MENU

PLEASE NOTE
Due to kitchen restrictions and in order to serve you faster, the following limited menu will be available during rugby week.

Thanks for your understanding!

Devils Advocate, 48 / 50 Lockhart Road, Wanchai, Hong Kong
www.devilsadvocate.com.hk

DEVILS ADVOCATE

SEVENS MENU

PLEASE NOTE
Due to kitchen restrictions and in order to serve you faster, the following limited menu will be available during rugby week.
Thanks for your understanding!

Devils Advocate, 48 / 50 Lockhart Road, Wanchai, Hong Kong
www.devilsadvocate.com.hk

DEVILS ADVOCATE

SEVENS MENU

PLEASE NOTE
Due to kitchen restrictions and in order to serve you faster, the following limited menu will be available during rugby week.
Thanks for your understanding!

Devils Advocate, 48 / 50 Lockhart Road, Wanchai, Hong Kong
www.devilsadvocate.com.hk

getting you closer to the action

Open 24hrs from Thursday til Sunday

2008 GFI HKFC TENS
The official 10's after-party!

20 THE SEVENS AT DEVILS 08

Sin Bin Parties
are back, every night from Sunday 23rd

Big 7's Breakfast
from Fri 8am-12md, Sat & Sun 7am-12md

Live Big Screen Action
Live Super 14's and HK 7's on the big screen

Full details on our website: www.devilsadvocate.com.hk

GUINNESS DEVILS ADVOCATE Carlsberg

G/F 48-50 Lockhart Road, Wanchai, Hong Kong
Tel: +(852) 2865 7271 Fax: +(852)2866 7583 www.devilsadvocate.com.hk

magazine adverts

2 CHANCES TO WIN 7's TICKETS from 10pm each month 2008 and best match 2008. You must be 18 to be able to win.

New 2008 Devils Merchandise for sale! Party shirts, caps, t-shirts, rugby shirts and more available. Come and see! While stocks last! (subject to availability)

30 THE SEVENS AT DEVILS 08

getting you closer to the action

GUINNESS

GUINNESS LUCKY DRAW
Win one set of sevens tickets, rugby shirts and more! Drink two pints of Guinness and receive a lucky draw entry to drop in the box at the bar. Winners will be notified by Guinness

Full details on our website: www.devilsadvocate.com.hk

DEVIL'S DIP
Win two sets of sevens tickets, two bar tabs worth \$666 plus rugby shirts, t-shirts and caps: Simply spend a minimum of \$500 in one day/night and enter your details in the lucky draw!

DEVILS ADVOCATE
G/F 48-50 Lockhart Road, Wanchai, Hong Kong
Tel: +(852) 2865 7271 Fax: +(852)2866 7583 www.devilsadvocate.com.hk

DEVILS ADVOCATE

10%

10% discount on all drinks
(excl. Happy Hour)

please present this card at time of ordering

DEVILS ADVOCATE

48-50 Lockhart Road
Wanchai, Hong Kong
T: 852 2865 7271
F: 852 2866 7583

www.devilsadvocate.com.hk

temp discount card

DEVILS ADVOCATE

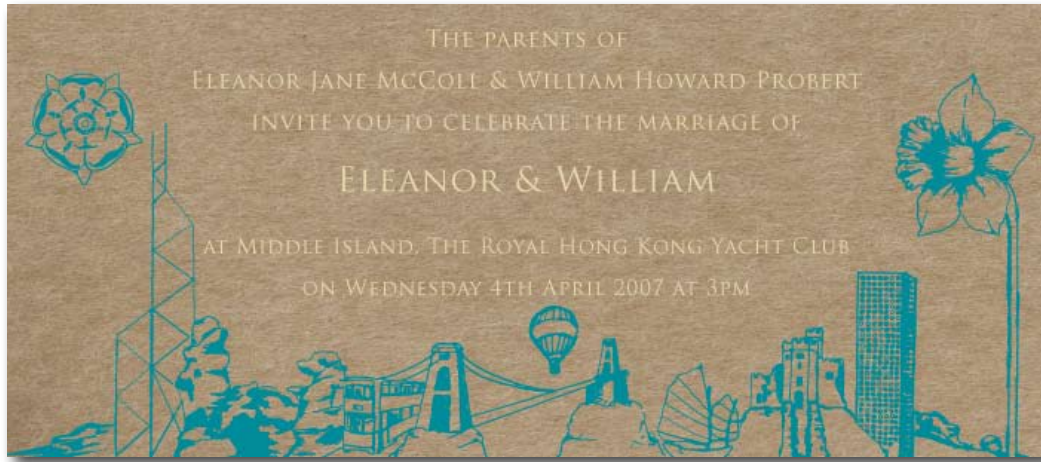
Membership Card

Club Name: _____

Member Name: _____

Member No: _____ Expires End: _____

membership card



details
invite, RSVP and envelope using the clients sketch and colour scheme

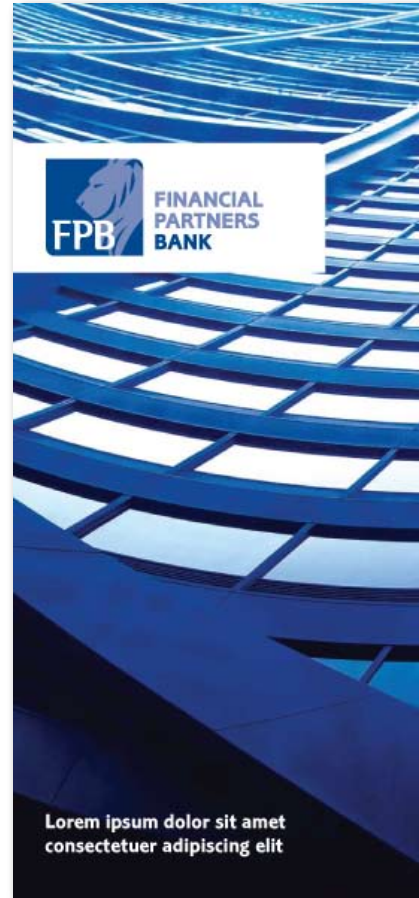


company brochure

details
template for printed items, the clients internal design team were to finish the project.



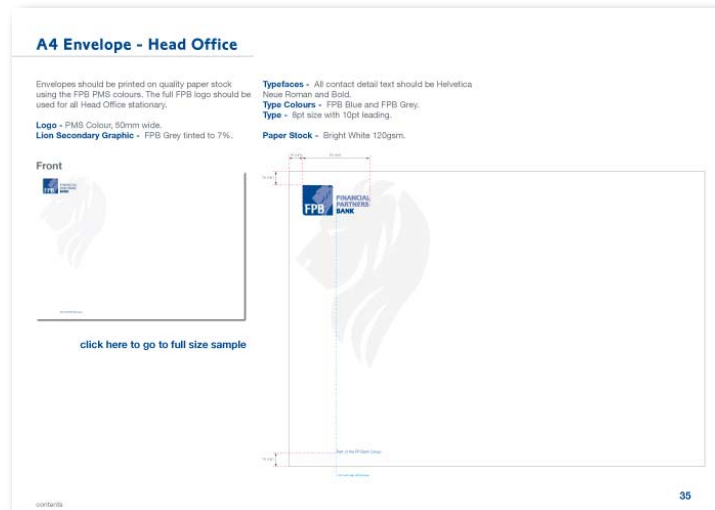
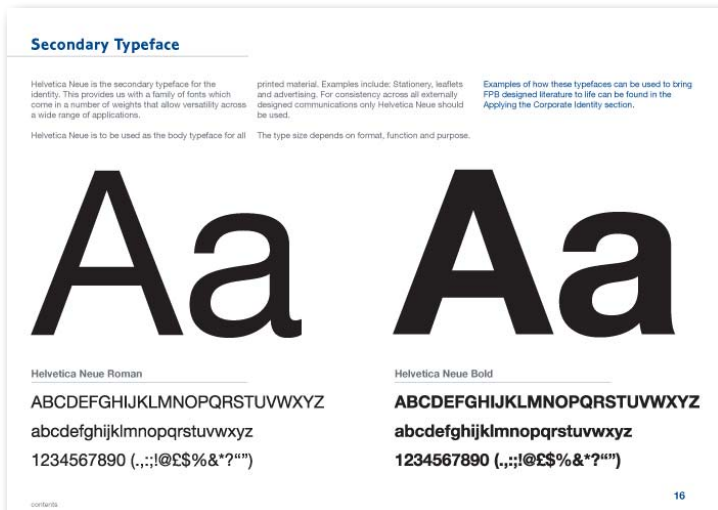
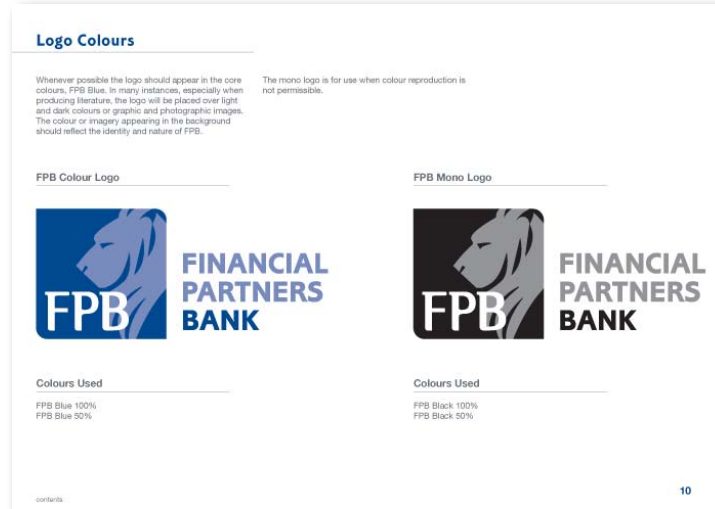
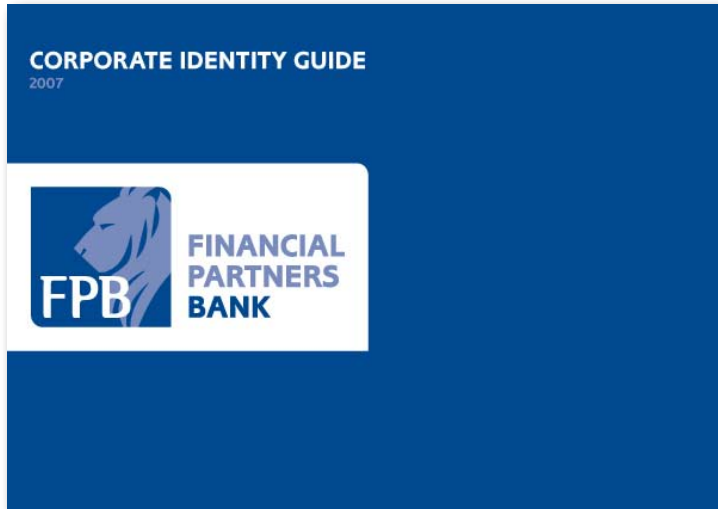
folder



leaflet

details

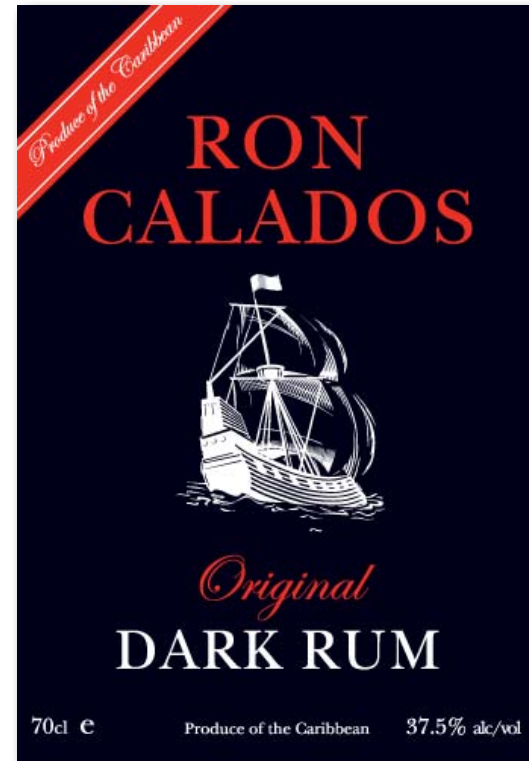
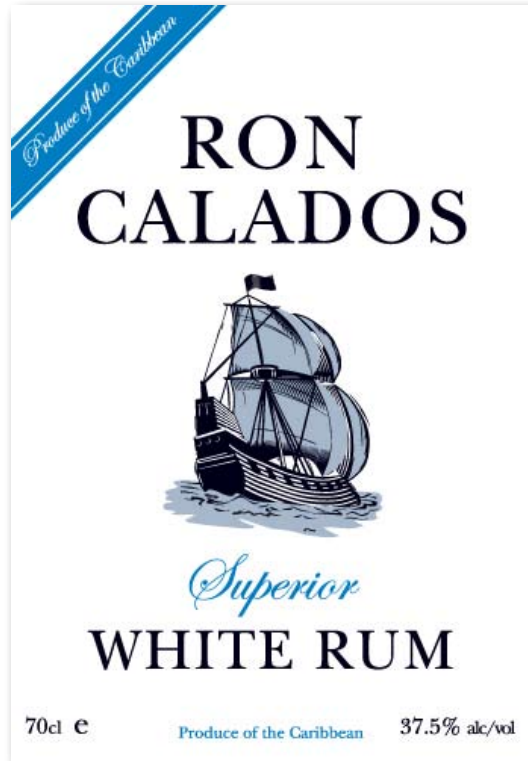
template for printed items, the clients internal design team were to finish the project.





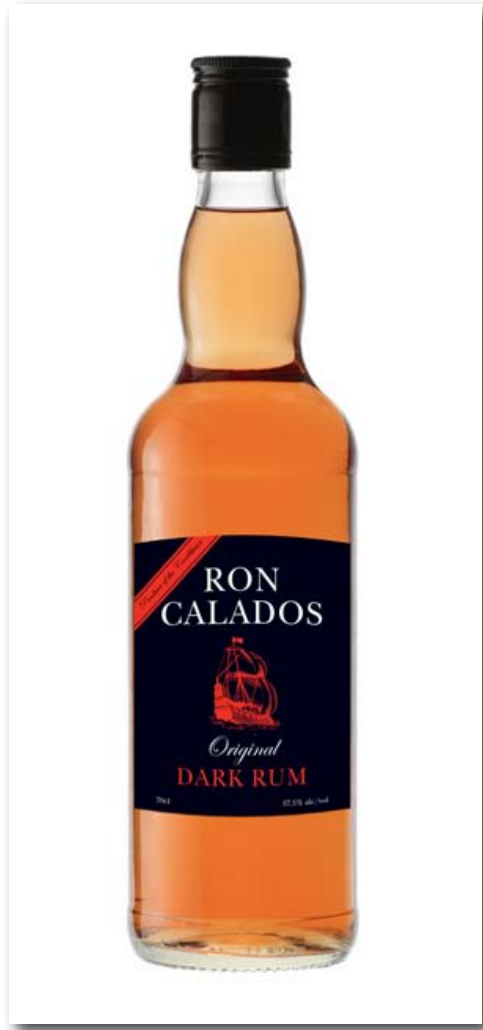
details

a re brand of the clients entry level 'house' brandy



details

a re brand of the clients entry level 'house' white and dark rum



details

a re brand of the clients entry level 'house' white and dark rum



details
promotional leaflets and folder



Member Advantages N° 55
aftercare solutions

The complete care and finishing finder service for property investors

aftercare Solutions

Instant Access MEMBER ADVANTAGES

aftercare Solutions

aftercare Solutions

Instant Access PROPERTIES

fuel

Sales Progression		Snag-To-Let Meeting		
<p>What We Do</p> <ul style="list-style-type: none"> Review the property for sale Provide you with the Buyers Pack containing marketing information, images of area and property checklist for the development Provide you with the development's completion date and the quality of the work Assist you through the process of Exchange, normally take place 15-20 days after confirmation of reservation Approved and submitted for your review (including insurance) Assist you through the process of Completion 	<p>What You Do</p> <ul style="list-style-type: none"> Sign the contract, reservation form and the Buyer's Pack Contact us if you do not receive the Buyers Pack Review the Sales Progression Form (checklist of your completed items) coming to us Request your lawyer to check all the documents received from the selling lawyer Satisfy yourself of any questions on the contract before the date of exchange Sign the contract, and handover within a specified timeframe Transfer the exchange payment and fees to your lawyer at least 5 days in advance of exchange Complete all requirements for completion (management of at least 3-4 weeks in advance of completion) Ensure mortgage offer in place 2 weeks prior to completion Transfer outstanding payment and fees to your lawyer at least 5 days in advance of completion Sign the deed etc, and return it within a specified timeframe "Snagging" on your property Arrange furnishing, flooring and lighting 	<p>What We Do</p> <ul style="list-style-type: none"> Take access from developers to inspect the property as soon as available Arrange final inspection by your preferred snagging company Ensure developer carry out remedial work Inspect the property again Confirm the work has been completed Disburse a condition report to you, Aftercare and Landlord 	<p>What AC Suppliers Do</p> <ul style="list-style-type: none"> Confirm the snagging company of service and cost Pay to address the snagging fee Review and accept the condition report upon satisfaction Disburse a condition report to you, Aftercare and Landlord 	<p>What You Do</p> <ul style="list-style-type: none"> Confirm the snagging company of service and cost Pay to address the snagging fee Review and accept the condition report upon satisfaction Disburse a condition report to you, Aftercare and Landlord
<p>Furnishing & Finishing</p> <ul style="list-style-type: none"> Provide advice on service (furniture, flooring and lighting) to suit your budget and other quality benefits Discuss your furnishing options and needs Start to relate and submit samples 	<p>What You Do</p> <ul style="list-style-type: none"> Complete all requirements for completion (management of at least 3-4 weeks in advance of completion) Ensure mortgage offer in place 2 weeks prior to completion Transfer outstanding payment and fees to your lawyer at least 5 days in advance of completion Sign the deed etc, and return it within a specified timeframe "Snagging" on your property Arrange furnishing, flooring and lighting 	<p>Furnishing & Finishing</p> <ul style="list-style-type: none"> Arrange measurement prior to completion Arrange delivery and installation as per agreed requirement and schedule 	<p>What AC Suppliers Do</p> <ul style="list-style-type: none"> Estimate budget Confirm the service and recommended suppliers Pay deposit in advance Pay remaining balance upon completion of service 	<p>What You Do</p> <ul style="list-style-type: none"> Estimate budget Confirm the service and recommended suppliers Pay deposit in advance Pay remaining balance upon completion of service
<p>Lighting Agent</p> <ul style="list-style-type: none"> Provide verbal market information and advice Regulate a discount rate for our members Provide details of leading selling agencies 	<p>What You Do</p> <ul style="list-style-type: none"> Complete all requirements for completion (management of at least 3-4 weeks in advance of completion) Ensure mortgage offer in place 2 weeks prior to completion Transfer outstanding payment and fees to your lawyer at least 5 days in advance of completion Sign the deed etc, and return it within a specified timeframe "Snagging" on your property Arrange furnishing, flooring and lighting 	<p>Lighting Agent</p> <ul style="list-style-type: none"> Provide verbal market information and advice Regulate a discount rate for our members Provide details of leading selling agencies 	<p>What AC Suppliers Do</p> <ul style="list-style-type: none"> Estimate budget Confirm the service and recommended suppliers Pay deposit in advance Pay remaining balance upon completion of service 	<p>What You Do</p> <ul style="list-style-type: none"> Estimate budget Confirm the service and recommended suppliers Pay deposit in advance Pay remaining balance upon completion of service
<p>Insurance</p> <ul style="list-style-type: none"> Provide the standard insurance package which is tailor-made for ISP members 	<p>What You Do</p> <ul style="list-style-type: none"> Complete all requirements for completion (management of at least 3-4 weeks in advance of completion) Ensure mortgage offer in place 2 weeks prior to completion Transfer outstanding payment and fees to your lawyer at least 5 days in advance of completion Sign the deed etc, and return it within a specified timeframe "Snagging" on your property Arrange furnishing, flooring and lighting 	<p>Insurance</p> <ul style="list-style-type: none"> Provide the standard insurance package which is tailor-made for ISP members 	<p>What AC Suppliers Do</p> <ul style="list-style-type: none"> Estimate budget Confirm the service and recommended suppliers Pay deposit in advance Pay remaining balance upon completion of service 	<p>What You Do</p> <ul style="list-style-type: none"> Estimate budget Confirm the service and recommended suppliers Pay deposit in advance Pay remaining balance upon completion of service



Instant Access ▶▶
MEMBER ADVANTAGES

propertyinvestor course

Please fill in the following information and return to Instant Access Properties (HK) Ltd. in person or by mail: 1704-05, 9 Queen's Road Central, Hong Kong

Member's Name: _____

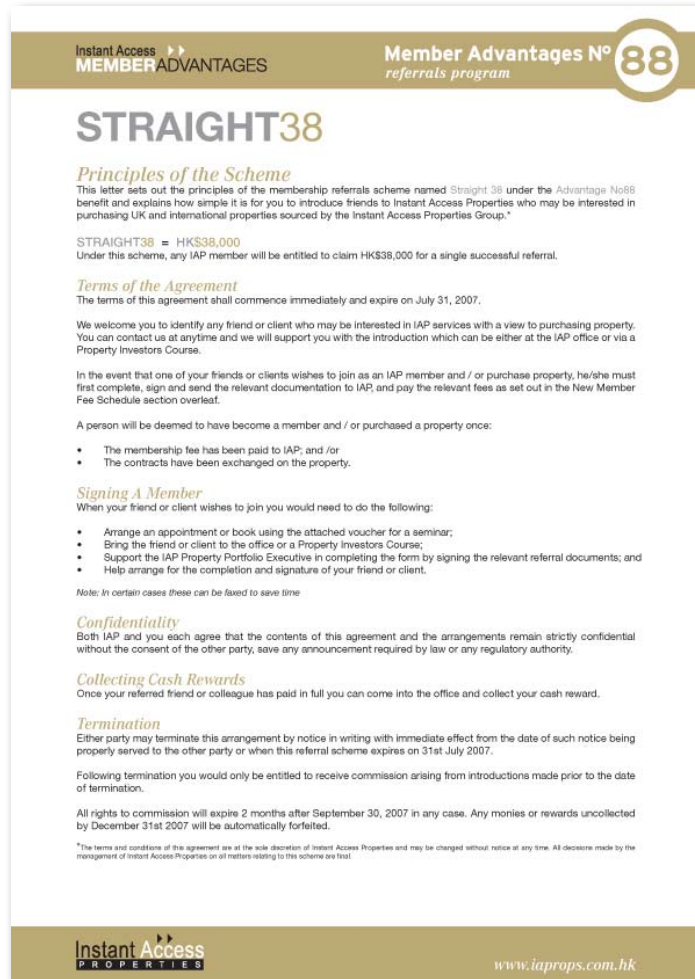
Guest Details

Name: _____ Spouse's Name: _____

Telephone No: _____ Email: _____

Signature: _____ Date: _____

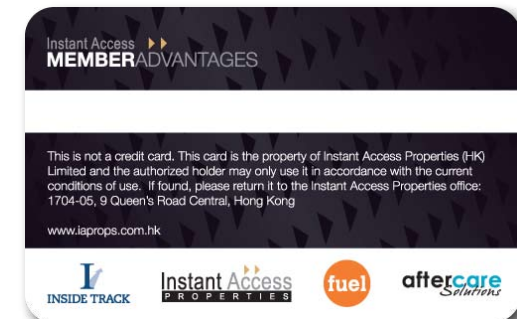




promotional letter and envelope



membership card




 BAVARIA YACHTS

923
 ESP
 9998
 6939

outstanding german quality
 backed by a five year guarantee

BAVARIA YACHTS
www.bavaria-racing.com

THE NEW MATCH SERIES
Co-designed by Doug Peterson (America's Cup), 35, 38 and 42 feet. At last, a serious racing yacht with a fitted out interior.

BAVARIA MOTOR BOATS
Superbly styled motor boats from 25 to 37 feet. Volvo engines and lots of teak.

PREMIER CRUISING YACHTS
From 32 feet to 49 feet. Customise your yacht by choosing its layout. Bavaria only start building your yacht after you have decided on the format you want.


jade marine
 OFFICIAL BAVARIA YACHT AGENT
www.jademarinehk.com

Visit the Bavaria web site to view the range of products from Europe's most modern boat yard. www.bavaria-yachtbau.com

Jade Marine (HK) Ltd.
 PO. BOX 30908
 Causeway Bay Post Office
 Hong Kong
 Tel. (852) 93338064
 Fax. (852) 28878550
 Email. jademarine@biznetvigator.com


 BAVARIA YACHTS

outstanding german quality
 backed by a five year guarantee

www.bavaria-racing.com

YATES 3
 Palma de Mallorca

THE NEW MATCH SERIES
Co-designed by Doug Peterson (America's Cup), 35, 38 and 42 feet. At last, a serious racing yacht with a fitted out interior.

BAVARIA MOTOR BOATS
Superbly styled motor boats from 25 to 37 feet. Volvo engines and lots of teak.

PREMIER CRUISING YACHTS
From 32 feet to 49 feet. Customise your yacht by choosing its layout. Bavaria only start building your yacht after you have decided on the format you want.






jade marine
 OFFICIAL BAVARIA YACHT AGENT
www.jademarinehk.com

Visit the Bavaria web site to view the range of products from Europe's most modern boat yard. www.bavaria-yachtbau.com

Jade Marine (HK) Ltd.
 PO. BOX 30908, Causeway Bay Post Office, Hong Kong
 Tel. (852) 93338064 Fax. (852) 28878550 Email. jademarine@biznetvigator.com

2004 catalogue

get on with your adventure

pacsafe
travel security

...ure, you can do more

when your gear's secure, you can **do more**

pacsafe
travel security

For more information or to locate your nearest dealer, you can contact us in the USA on [1] 800 878 9415 or via email at info@pac-safe.com. For the rest of the world please contact your local distributor or call our Hong Kong office on [852] 2575 0921 or via email at outpac@pac-safe.com

www.pac-safe.com

do more

The best thing about travel is the sense of freedom, adventure and excitement it brings. Whether you are traveling to the ends of the earth or the other end of town, it's the sense of something different that makes it so exhilarating. The last thing you want to be weighed down with on your travels are concerns about whether or not your stuff is safe and secure.

Like any adventure, you are better equipped to throw yourself into it if you have a definite sense of basic security. It takes a split second for a seasoned pickpocket to make you another victim while you examine a map, assist with a photograph or check a timetable. Don't let it happen to you.

To help you get the most out of all your adventures, Pacsafe have created the range of products available to you now. By securing your valuables with Pacsafe products, you are free to really get on with and into your adventures.

pacsafe
travel security

pacsafe with alarm
secure backpack & bag protector

These 4 round your pack secure it to something fixed and get on with your adventure. You also mean there's one to fit almost every type of back pack, soft sided wheeled luggage and roller bag.

ADDITIONAL PROTECTION
Pacsafe's 4 round your pack secure it to something fixed and get on with your adventure. You also mean there's one to fit almost every type of back pack, soft sided wheeled luggage and roller bag.

pacsafe 55 ●●○○
Formerly 50 backpack model

Perfect for small backpacks and smaller luggage items.

- Fits volume approximately 1000-1400cm³ (35-50L)
- Weighs 1.1kg (2.4lb), including padlock
- Fits to 55L (20" x 35" x 10")
- Made in USA
- Padlock included
- Carry pouch included

pacsafe 85 ●●○○

Fit most popular sized backpacks, duffels and soft sided wheeled luggage.

- Fits volume approximately 1400-2000cm³ (50-70L)
- Weighs 1.2kg (2.6lb), including padlock
- Fits to 55L (20" x 35" x 10")
- Made in USA
- Padlock included
- Carry pouch included

pacsafe 120 ●●○○

Designed for large packs or medium packs with external front pack, large duffels and soft sided wheeled luggage.

- Fits volume approximately 1800-2400cm³ (65-85L)
- Weighs 1.5kg (3.3lb), including padlock
- Fits to 55L (20" x 35" x 10")
- Made in USA
- Padlock included
- Carry pouch included

pacsafe 140 ●●○○

Designed for large duffels and soft sided wheeled luggage. Ideal for chairs, paragliders and gear racks on skis.

- Fits volume approximately 1800-2400cm³ (65-85L)
- Weighs 1.5kg (3.3lb), including padlock
- Fits to 55L (20" x 35" x 10")
- Made in USA
- Padlock included
- Carry pouch included

Important note: For volumes with external gear/locking bag, see note 1 on inside of the pack - additional approximately 1000cm³ per item in the pack volume. Packing weight is calculated on industry average for items. For the best results, speak to a salesperson before you buy to ensure you get the right size for your pack or bag.

pacsafe
travel security

coversafe with alarm
secure wallet/wallet

Coversafe has a dual point wire reinforced neck. It's also made from a reinforced fabric and has a concealed alarm. It also has a concealed alarm and a concealed alarm. It also has a concealed alarm and a concealed alarm.

- Dimensions: 11x4x2.5cm
- Fits wallet size: 20-40x7.5-11.5cm
- Model: G200 - Black
- Model: G204 - Tan
- Padlock included

stashsafe with alarm
secure hip pack

StashSafe features wire reinforced fabric and has a concealed alarm. It also has a concealed alarm and a concealed alarm. It also has a concealed alarm and a concealed alarm.

- Dimensions: 11x4x2.5x7.5x15.2x3.5cm
- Fits waist size: 20-40x7.5-11.5cm
- Model: H200 - Black
- Model: H204 - Tan
- Padlock included

pouchsafe with alarm
secure neck pouch

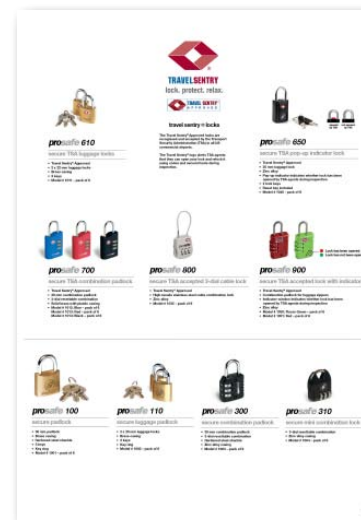
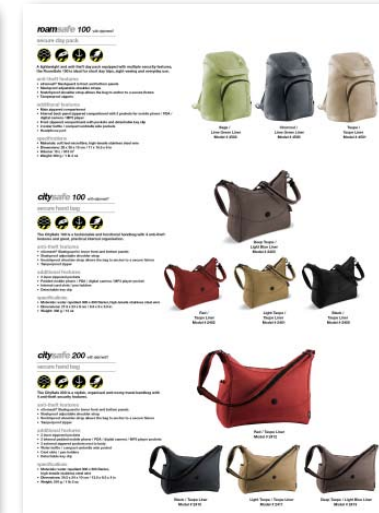
PouchSafe has a dual point wire reinforced neck. It's also made from a reinforced fabric and has a concealed alarm. It also has a concealed alarm and a concealed alarm. It also has a concealed alarm and a concealed alarm.

- Dimensions: 16x5x10x10x10cm
- Model: G200 - Black
- Model: G204 - Tan
- Padlock included

gosafe with alarm
secure shoulder bag

Gosafe features a dual point wire reinforced neck. It's also made from a reinforced fabric and has a concealed alarm. It also has a concealed alarm and a concealed alarm. It also has a concealed alarm and a concealed alarm.

- Dimensions: 16x5x10x10x10cm
- Model: H200 - Black
- Model: H204 - Tan
- Padlock included



pacsafe
travel security

Slashproof Strap
Stops cut and run

Tamperproof Zippers
Stops pickpockets

Snatchproof Strap
Anchors and locks your bag to prevent snatching

eXomesh Slashguard
Stops knives and razors / bag slasher's

exomesh
anti-theft technology

pacsafe
travel security

Fully encase and secure your belongings in eXomesh Ultimate.

Slashproof eXomesh cage
Locks closed

lock leave and relax
Locks to a secure fixture

- Slashproof
- Snatchproof
- Tamperproof

exomesh ultimate
the complete lock & frame system

pacsafe
travel security

Slashproof Strap
Stops cut and run

Snatchproof Strap
Anchors and locks your bag to prevent snatching

Tamperproof Zippers
Stops pickpockets

eXomesh Slashguard
Stops knives and razors / bag slasher's

exomesh
anti-theft technology

page title: **accessories**
description: locks / luggage straps / cable locks

theft scenario: 7
description: Checked baggage in airports, bags and luggage an easy target for pilfering.

page title: **adventure**
description: high-tensile stainless steel backpack & bag protectors / backpacks / duffel bags

eXomesh ultimate
the complete lock & leave system

Lock & Leave Solution:
Fully encases belongings in eXomesh steel cage enables User to Lock, leave and Relax

- ✓ Slashproof
- ✓ Snatchproof
- ✓ Tamperproof

theft scenario: 3
description: Long train journey, prolonged hours in a confined space - difficult to keep an eye on your belongings

page title: **urban & leisure**
description: messenger bags / backpacks / shoulder bags / computer bags / hip packs

- Slashproof Strap
Stops cut and run
- Tamperproof Zippers
Stops pickpockets
- Snatchproof Strap
Anchors and locks your bag to prevent snatching
- eXomesh Slashguard
Stops knives and razors / big slashers

theft scenario: 5
description: The Metro/subway - prime location for pickpockets and snatch and grab thieves

SILVER HERITAGE LTD
DIGITAL CASINOS ACROSS ASIA

SLOTS

CASINO



SILVER HERITAGE LTD
DIGITAL CASINOS ACROSS ASIA

HONG KONG OFFICE
Suite 109-10, Stag Building
1st & Queens Road Central
Central
Hong Kong
Tel: (852) 2110 1884
Fax: (852) 8148 2916
www.silverheritagegroup.com

MACAU OFFICE
16/F Hoys Trade Center
918 Avenida Da Amizade
Macau
Tel: (853) 796 8193
Fax: (853) 727 852

SILVER HERITAGE LTD
DIGITAL CASINOS ACROSS ASIA

Our Company
Silver Heritage Limited (SHL) is quickly becoming recognized as a market leader in the provision and management of sophisticated digital gaming to licensed casinos across Asia. Offering state-of-the-art online slot gaming services and modern slot machines on their premises, SHL currently has operations contracts for 20 casinos across the region.

Our Services
As a full service electronic gaming management firm, SHL is highly experienced in providing fully automated casino games built on mobile, desktop and tablet, soccer and horse racing wagering, and modern slot machine alternatives to casinos.

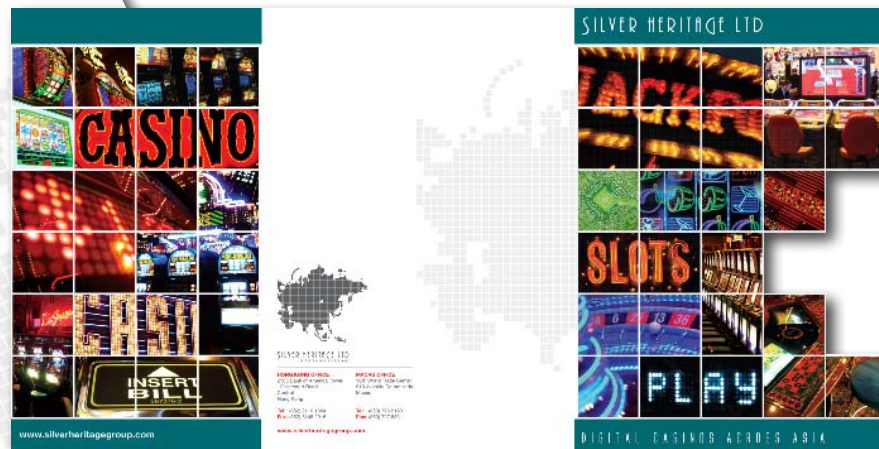
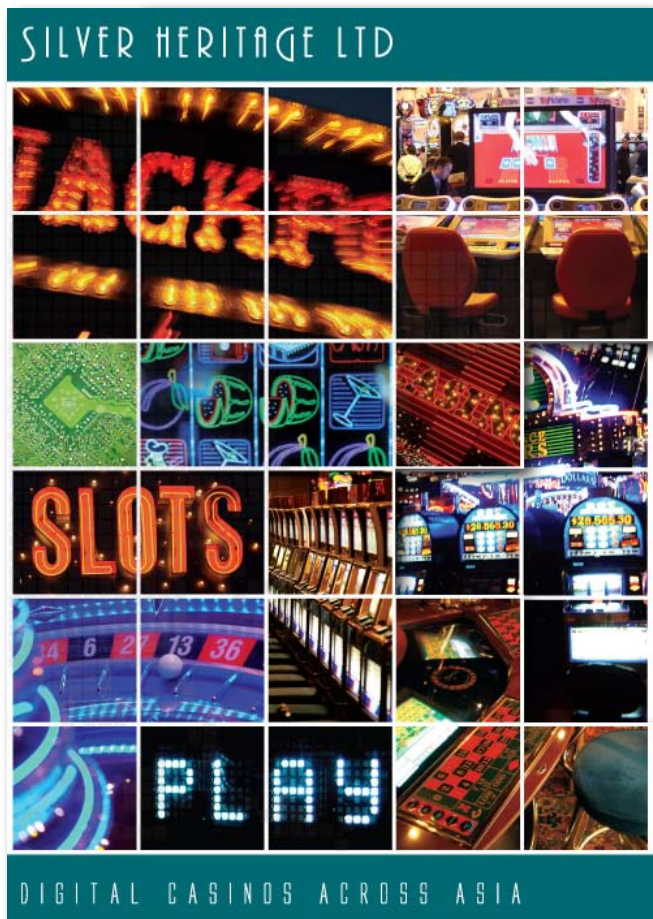
Our Operations
SHL currently owns all of the gaming machines and manages each venue from procurement and installation through promotion, operation, and maintenance. SHL derives its income from a participant revenue share with its local casino partners and the government (through gaming taxes).

Silver Heritage also recently entered into a cooperation agreement with Asia-based Internet Gaming (AIG), the world's largest server-based gaming provider with over 70,000 digital networked gaming terminals across the UK and Europe - whereby SHL will deploy and manage over 500 live gaming positions across the region.

Our Experience
With the experience and expertise of SHL's seasoned casino and technical professionals, it is expected that by the end of 2017 SHL will be operating gaming machines in over 10 licensed casinos in 5 countries: Macau, Vietnam, The Philippines, Cambodia and Laos as well as on board multiple cruise ships in the region.

Our Growth
SHL's growth will be exponential with the immediate expansion in 2017 will give SHL, and its shareholders access to casino slot and gaming throughout Asia Pacific, whilst the medium to long term operations and distribution pipeline will see SHL grow steadily for years to come.

Our Countries
SHL is in active and advanced negotiations with casino operators in Macau and The Philippines and is already operating in Cambodia, Laos, Vietnam, and on a cruise ship sailing in South East Asian waters.



SILVER HERITAGE LTD
DIGITAL CASINOS ACROSS ASIA

Our Company
Silver Heritage Ltd is a leading international gaming and entertainment group with the largest digital casino portfolio in the world.
"To establish additional sustainable revenue streams for operators via slots, sports betting and online products in licensed states and casinos throughout the Asia Pacific region"

Our Countries
Silver Heritage Ltd is active and advanced negotiations with casino operators in Macau and the Philippines, and is actively operating in Cambodia, Laos, Vietnam, and an on-ship setting in South East Asian waters.

Cambodia
Country Background
Situated in the heart of Southeast Asia, Cambodia is a country of rich cultural heritage and natural beauty. The country is a member of the Association of South East Asian Nations (ASEAN) and the World Trade Organization.
Gaming
Silver Heritage Ltd has a partner casino license in Cambodia.
Planned for up to five more by Q4 2017

Laos
Country Background
Laos is a landlocked country in Southeast Asia, bordered by Thailand to the west, Myanmar to the south, and China to the north and east. It is a member of the Association of South East Asian Nations (ASEAN) and the World Trade Organization.
Gaming
Silver Heritage Ltd has a partner casino license in Laos.
Planned for up to five more by Q4 2017

Macau
Country Background
Macau is a special administrative region of the People's Republic of China, located on the southern coast of the mainland. It is a member of the World Trade Organization.
Gaming
Silver Heritage Ltd has a partner casino license in Macau.
Planned for up to five more by Q4 2017

Philippines
Country Background
The Philippines is an archipelago in Southeast Asia, consisting of more than 7,000 islands. It is a member of the Association of South East Asian Nations (ASEAN) and the World Trade Organization.
Gaming
Silver Heritage Ltd has a partner casino license in the Philippines.
Planned for up to five more by Q4 2017

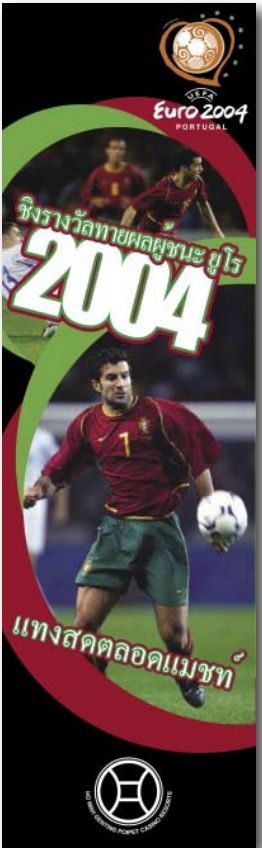
Singapore
Country Background
Singapore is a city-state and island country in Southeast Asia. It is a member of the Association of South East Asian Nations (ASEAN) and the World Trade Organization.
Gaming
Silver Heritage Ltd has a partner casino license in Singapore.
Planned for up to five more by Q4 2017

Vietnam
Country Background
Vietnam is a country in Southeast Asia, bordered by Laos to the west, Cambodia to the southwest, and the Gulf of Thailand to the south. It is a member of the Association of South East Asian Nations (ASEAN) and the World Trade Organization.
Gaming
Silver Heritage Ltd has a partner casino license in Vietnam.
Planned for up to five more by Q4 2017

www.silverheritagegroup.com

The 2nd Annual Macau Investment Forum
Cocktail Sponsor
SILVER HERITAGE LTD
DIGITAL CASINOS ACROSS ASIA

www.silverheritagegroup.com



It would take **88** casters to move the Statue of Liberty from Liberty Island to Manhattan*

Making A Move

SRC Smooth Ride Casters, Inc.
2646 River Ave. Unit B, Rosemead, CA 91770
Ph: 626-872-7000 Fax: 626-203-0698 E: info@srcasters.com

*Disclaimer: All calculations are approximate and not for use in critical applications. Calculations are based on an assumed bearing and wheel material and do not take into account load capacity, wheel diameter, and other factors. Consult your distributor for more information.

CATALOG

It would take **1,330,624** casters to move the Statue of Liberty from New York City to Black Hills, South Dakota*

*Disclaimer: All calculations are approximate and not for use in critical applications. Calculations are based on an assumed bearing and wheel material and do not take into account load capacity, wheel diameter, and other factors. Consult your distributor for more information.

BEARING OPTIONS

RIG FINISH OPTIONS

BRAKE OPTIONS

It would take **2,034,506** casters to move the Statue of Liberty from New York City to Los Angeles*

*Disclaimer: All calculations are approximate and not for use in critical applications. Calculations are based on an assumed bearing and wheel material and do not take into account load capacity, wheel diameter, and other factors. Consult your distributor for more information.

05 SERIES CASTERS SWIVEL PLATE

Features: Back plate / Double ball bearings / Double ball coverage

Brake Options: 2, 4, 6 or none. Available in Total Lock, enter 7 for Total Lock, (e.g. 1000-001-7000) 4, 6, 8 or none. Available in Side Lock, enter 0 for Side Lock, (e.g. 1000-001-1000)

Rig Finish Options: Available in zinc, enter 00 for Black paint, 01 for Silver finish, (e.g. 1000-001-7000). For other options, please contact us.

WHEEL SIZE	WHEEL TYPE	WHEEL MATERIAL	BEARING	APPROX. LOAD CAPACITY	APPROX. WHEEL WEIGHT	STEM SIZE	STEM LENGTH	ITEM NUMBER
3	1 1/2	000	Polycarbonate	Double Ball	2,500	4.88	2.34	1000-001-1000
		001	Polycarbonate	Double Ball	2,500	4.88	2.34	1000-001-1001
		175	Thermoplastic Rubber	Double Ball	2,500	4.88	2.34	1000-001-1075
		002	Polycarbonate	Double Ball	2,500	4.88	2.34	1000-001-1002
4	1 1/2	000	Polycarbonate	Double Ball	2,500	4.88	2.34	1000-001-1000
		001	Polycarbonate	Double Ball	2,500	4.88	2.34	1000-001-1001
		175	Thermoplastic Rubber	Double Ball	2,500	4.88	2.34	1000-001-1075
		002	Polycarbonate	Double Ball	2,500	4.88	2.34	1000-001-1002
6	1 1/2	000	Polycarbonate	Double Ball	3,000	5.13	2.34	1000-001-1000
		001	Polycarbonate	Double Ball	3,000	5.13	2.34	1000-001-1001
		175	Thermoplastic Rubber	Double Ball	3,000	5.13	2.34	1000-001-1075
		002	Polycarbonate	Double Ball	3,000	5.13	2.34	1000-001-1002
8	1 1/2	000	Polycarbonate	Double Ball	3,500	5.38	2.34	1000-001-1000
		001	Polycarbonate	Double Ball	3,500	5.38	2.34	1000-001-1001
		175	Thermoplastic Rubber	Double Ball	3,500	5.38	2.34	1000-001-1075
		002	Polycarbonate	Double Ball	3,500	5.38	2.34	1000-001-1002

05 SERIES CASTERS THREAD STEM

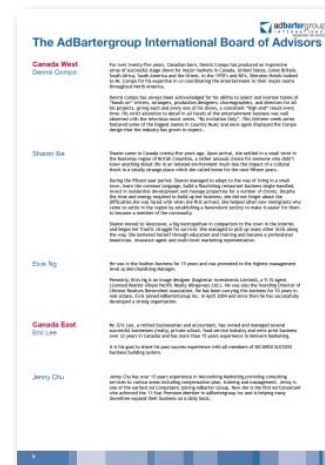
Features: Back plate / Double ball bearings / Double ball coverage

Brake Options: 2, 4, 6 or none. Available in Total Lock, enter 7 for Total Lock, (e.g. 1000-001-7000) 4, 6, 8 or none. Available in Side Lock, enter 0 for Side Lock, (e.g. 1000-001-1000)

Rig Finish Options: Available in zinc, enter 00 for Black paint, 01 for Silver finish, (e.g. 1000-001-7000). For other options, please contact us.

WHEEL SIZE	WHEEL TYPE	WHEEL MATERIAL	BEARING	APPROX. LOAD CAPACITY	APPROX. WHEEL WEIGHT	STEM SIZE	STEM LENGTH	ITEM NUMBER
3	1 1/2	000	Polycarbonate	Double Ball	2,500	4.88	2.34	1000-001-1000
		001	Polycarbonate	Double Ball	2,500	4.88	2.34	1000-001-1001
		175	Thermoplastic Rubber	Double Ball	2,500	4.88	2.34	1000-001-1075
		002	Polycarbonate	Double Ball	2,500	4.88	2.34	1000-001-1002
4	1 1/2	000	Polycarbonate	Double Ball	2,500	4.88	2.34	1000-001-1000
		001	Polycarbonate	Double Ball	2,500	4.88	2.34	1000-001-1001
		175	Thermoplastic Rubber	Double Ball	2,500	4.88	2.34	1000-001-1075
		002	Polycarbonate	Double Ball	2,500	4.88	2.34	1000-001-1002
6	1 1/2	000	Polycarbonate	Double Ball	3,000	5.13	2.34	1000-001-1000
		001	Polycarbonate	Double Ball	3,000	5.13	2.34	1000-001-1001
		175	Thermoplastic Rubber	Double Ball	3,000	5.13	2.34	1000-001-1075
		002	Polycarbonate	Double Ball	3,000	5.13	2.34	1000-001-1002
8	1 1/2	000	Polycarbonate	Double Ball	3,500	5.38	2.34	1000-001-1000
		001	Polycarbonate	Double Ball	3,500	5.38	2.34	1000-001-1001
		175	Thermoplastic Rubber	Double Ball	3,500	5.38	2.34	1000-001-1075
		002	Polycarbonate	Double Ball	3,500	5.38	2.34	1000-001-1002

Stem Size: 3/4 inch, 3/8" diameter, 1.98" x 1.31" Long





details
media kit folder